



UNCORKED 5K PARTICIPANT GUIDE

Welcome to race week! Learn all you need to know about race day from this guide and our [website](#). We look forward to seeing you this weekend, it looks like a beautiful day to run, walk, and drink some wine!

EVENT DATE

Saturday, October 2, 2021

START TIME

9:00 AM

LOCATION

[Botham Vineyards](#)
[8180 Langberry Rd.](#)
[Barneveld, WI 53507](#)

PARKING

ARRIVE EARLY AS PARKING MAY BECOME CONGESTED. Parking will be available in the grass field. Please proceed past the Botham Vineyards driveway and use the grass opening near the top of the hill to enter the parking area. A parking crew will be on hand to direct you to the nearest available parking location. Please come early as the road closes at 8:45AM and traffic can become congested. Also note, the grass may be wet from the morning dew.

PACKET PICK-UP LOCATIONS AND TIMES

PICKUP EARLY TO AVOID MORNING-OF LINES AND GET A FREE POUR OF WINE AT TOOT + KATE'S!

You MAY pick up someone else's packet! Please bring their QR code.

Early Packet Pick-Up
Friday, October 1, 2021
4:00pm-7:00pm
[Toot + Kate's Winebar](#)
[109 S. Main St.](#)
[Verona, WI 53593](#)

Race Day Packet Pick-Up
Saturday, October 2, 2021
7:30am-8:45am
[Botham Vineyards](#)
[8180 Langberry Rd.](#)
[Barneveld, WI 53507](#)

COURSE INFORMATION & UPDATES

THE COURSE WILL BE WELL MARKED, BUT PLEASE REFER TO THE COURSE MAP BELOW TO FAMILIARIZE YOURSELF WITH THE ROUTE.

• The course begins by running down the driveway of Botham Vineyards. Upon reaching the road, participants will turn right and head straight to the top of our first hill. After reaching the top, participants will hit a turn-around point and run back down the hill and out to County Highway K. Participants will turn left onto County Highway K and proceed up the gentle incline and away from Botham Vineyards. After reaching the turn-around point at the far end of County Highway K, participants will return on County Highway K all the way back to Langberry Rd. After turning right onto Langberry Rd. participants will face the last climb of the race as they turn right into the Botham Vineyards driveway and proceed to the finish line.

[CLICK HERE FOR COURSE MAPS](#)

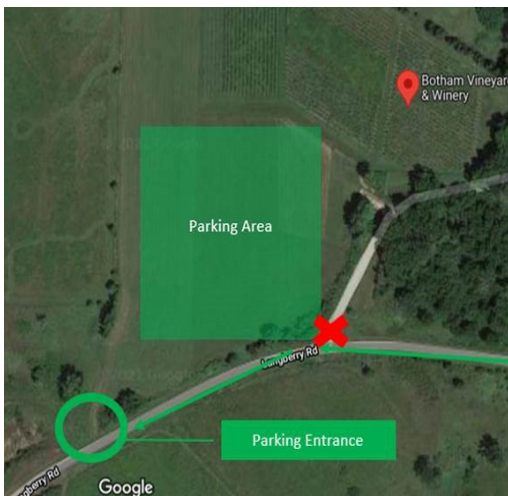
AID STATIONS & RESTROOMS

- **Restrooms:** Restrooms will be located near the start/finish area.
- **Aid stations:** There will be two aid stations on the course. One at the intersection of Langberry Rd. and County Highway K. And the other at the turn-around point on County Highway K. Each aid station will be stocked with water.

POST RACE PARTY

The run/walk is nice but we hope you'll stick around for the fun afterwards!

- Post race snacks and refreshments (water and soda) will be available after you finish.
- One FREE beverage, wine or beer, will be available for all participants.
- Live music from Frank Martin Busch and The Names post race until 12:30pm.
- Additional Botham Wine will be available for purchase!



PRODUCED BY:

